

VENISON

Saddle 11 Rib

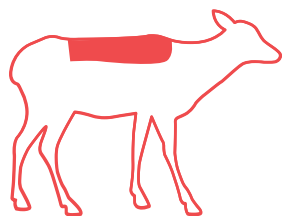


Image illustrative only

Specifications

11-rib saddle, flap removed 45 mm (+/- 5 mm) from the eye.
100% grass fed venison.

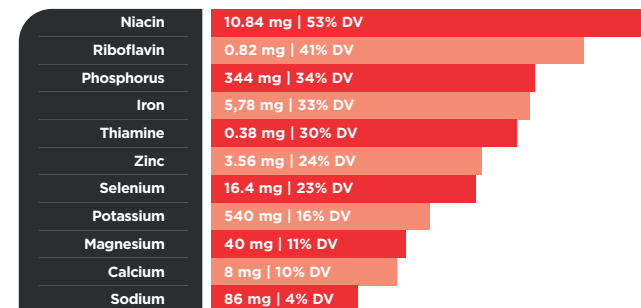
Weight:	7.2 - 7.5 kg
Units/pack:	1
Units/box:	3



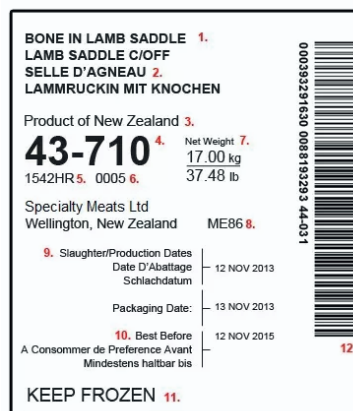
Nutritional Values

170 grams of venison contain approximately:

CALORIES	204 kcal
FATS	4.12 g
PROTEINS	39 g



Labelling



Our labels contain the following information:

- Generic Identification (species) and either Bone-in or Boneless statement with generic cut description
- Multi-lingual cut description in language of your choice
- Country of origin (New Zealand)
- Item number
- Time of packing carton
- In-house company code number showing carton number for day
- Weight in kgs and lbs
- Establishment number
- Multi-lingual slaughter date in language of your choice
- Multi lingual best before date in language of your choice
- Storage instructions
- In-house company bar code.

Packaging

The product is vacuum packed in a specially formulated sealed bag.

Other packaging options are available, depending on customer requirements.



100% raised in New Zealand

specialtymeats.co.nz